



FM 80524



**Band Width:** 16mm (5/8")

**Material Specification:**

Band, Housing, Buckle: BS304 - EN1.4301  
Screw: BS410 - EN1.4006 heat treated to 1220N/mm<sup>2</sup>

**Recommended Tightening Torque:**

10 - 15Nm 90 - 130lb.in

# TAMTORQUE®

## SIGN FIXING CLAMPS

TAMTORQUE SIGN FIXING CLAMPS have been designed for clamping signs of all types to round, square, hexagon or any unusual shaped post, giving a quick and reliable fix every time. They are available in seven diameters covering post sizes from 55mm to 340mm diameter without the need to cut the band to size. They do not therefore have sharp edges which can snag or cut and, unlike other banding systems, can be easily re-used or readjusted.

TAMTORQUE SIGN FIXING CLAMPS are manufactured from high strength stainless steel and have a hardened tamper resistant screw with a unique recessed seven-sided socket. This means that they can only be tightened or released with a special Tamtorque screw bit.

An auto locking safety buckle ensures the free end of the band is both safe and tidy. The unique safety buckle was developed especially for TAMTORQUE and is covered by patents in many countries. European Patent No 0891508. US Patent No 6205624. Other patents are pending.

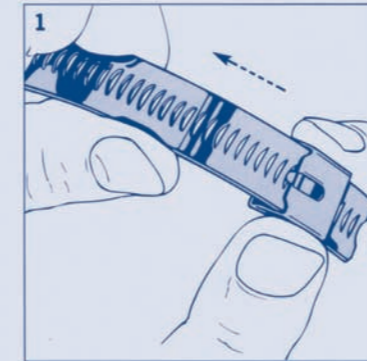
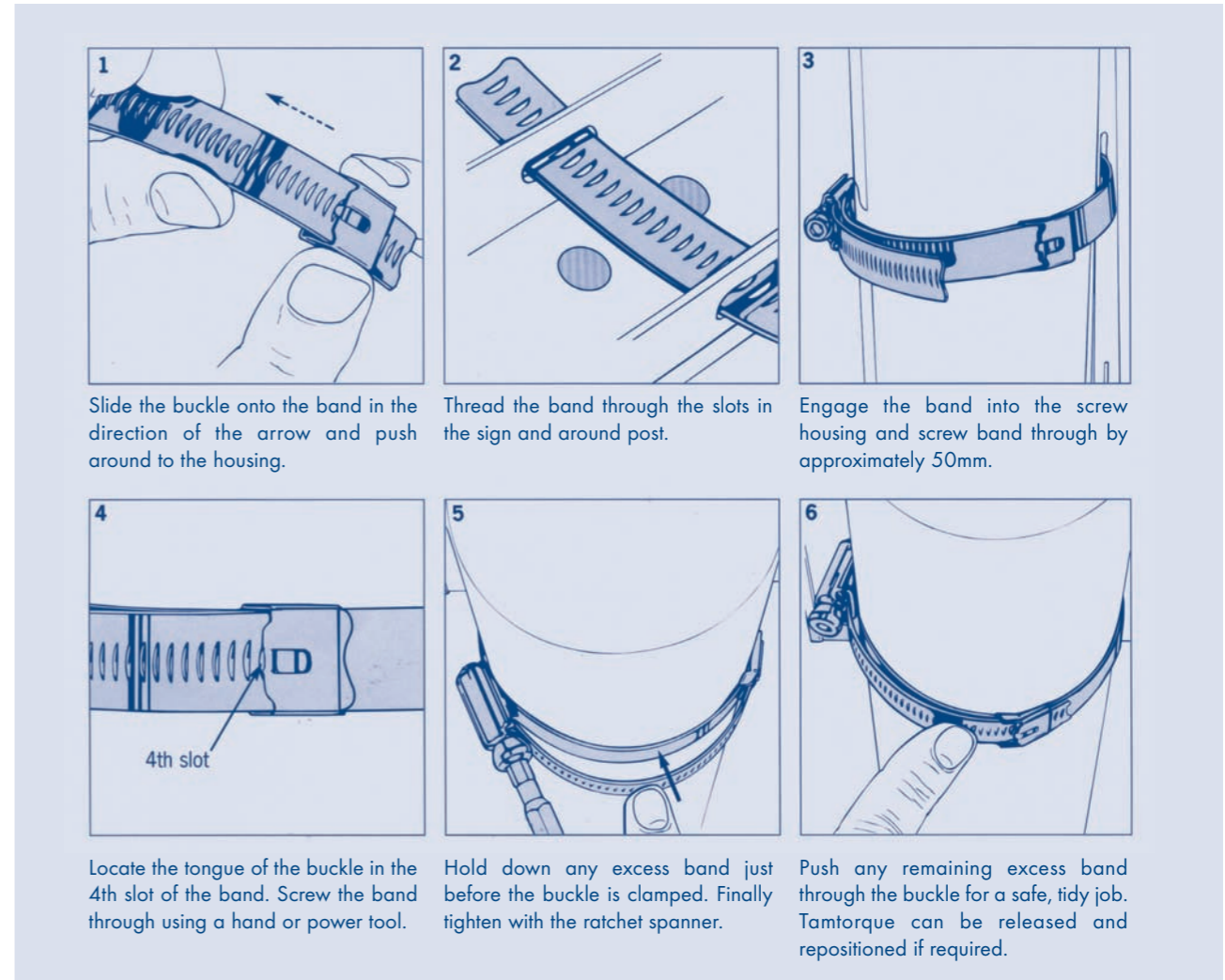
Typical applications for TAMTORQUE SIGN FIXING CLAMPS include securing waste bins and litter bins, street lamp and signal control box security and clamping road, public, industrial and advertising signs.



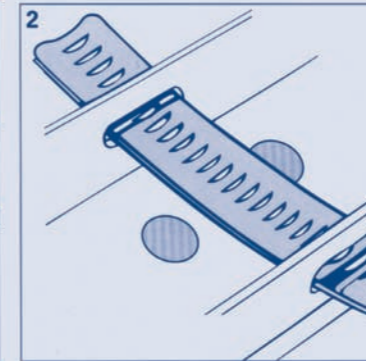
# TAMTORQUE®

# TAMTORQUE®

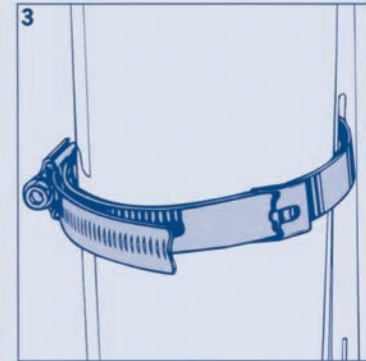
## BANDING SYSTEM



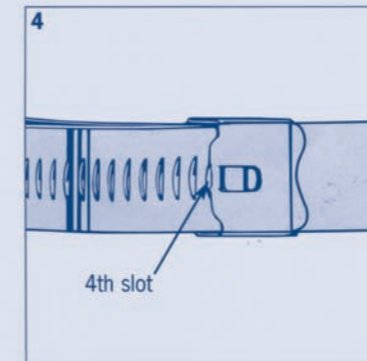
1 Slide the buckle onto the band in the direction of the arrow and push around to the housing.



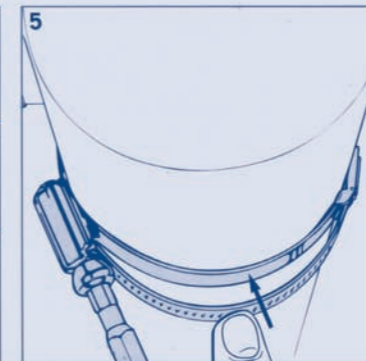
2 Thread the band through the slots in the sign and around post.



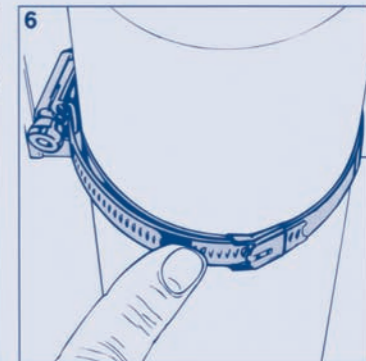
3 Engage the band into the screw housing and screw band through by approximately 50mm.



4 Locate the tongue of the buckle in the 4th slot of the band. Screw the band through using a hand or power tool.



5 Hold down any excess band just before the buckle is clamped. Finally tighten with the ratchet spanner.



6 Push any remaining excess band through the buckle for a safe, tidy job. Tamtorque can be released and repositioned if required.

**STANDARD RANGE**

size	JCS Part No	for post diameters*		box qty
		mm	ins	
70	TTK70P	55 - 70	2 1/8 - 2 3/4	50
100	TTK100P	70 - 100	2 3/4 - 4	50
130	TTK130P	100 - 130	4 - 5 1/8	50
(160)	TTK160P	130 - 160	5 1/8 - 6 1/4	50
190	TTK190P	130 - 190	5 1/8 - 7 1/2	25
250	TTK250P	190 - 250	7 1/2 - 9 7/8	25
340	TTK340P	250 - 340	9 7/8 - 13 3/8	25

\*For close fitting brackets. It will be necessary to make an allowance for the extra band length that U brackets and similar will require.

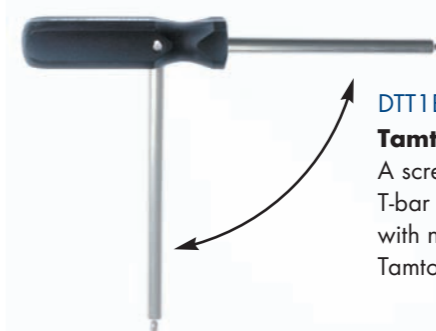
( ) = Not required for a complete range but a useful intermediate size for many applications.

**Note:** For the quickest fixing time we recommend a cordless drill/driver (with a Tamtorque Power Bit) followed by final tightening with the Tamtorque Ratchet Spanner.

## TAMTORQUE® TOOLS



**DTT2BG Tamtorque Ratchet Spanner**  
1/4" square ratchet driver complete with a Tamtorque socket bit.



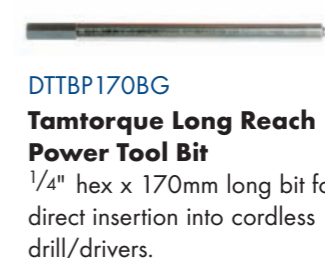
**DTT1BG Tamtorque Driver**  
A screwdriver and T-bar combination tool with non-removable Tamtorque bit.



**DTTBP50BG Tamtorque Power Tool Bit**  
1/4" hex x 50mm long bit for direct insertion into cordless drill/drivers. Two bits per bag.

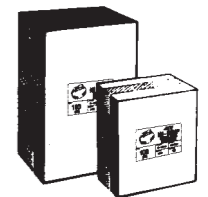


**DTTB2BG Tamtorque 1/4" Square Socket Bit**  
For use with the Tamtorque or other ratchet spanners.



**DTTBP170BG Tamtorque Long Reach Power Tool Bit**  
1/4" hex x 170mm long bit for direct insertion into cordless drill/drivers.

## PACKAGING



**BULK PACKS**

- All sizes of TAMTORQUE sign fixing clamps are supplied in bulk packs