

HEAVY-DUTY

We offer one of the most comprehensive lines of heavy-duty clamping products in the business. Our heavy-duty products include T-Bolts, Spring Loaded T-Bolts, V-Bands, Heavy-Duty and Constant Tension worm drive clamps. We cover the world of heavy-duty truck, off-road and industrial applications. We can even custom engineer a product that will meet your special fastening requirements.

T-BOLTS

Heavy-duty T-Bolt clamps provide uniform sealing pressure for a positive, reliable seal. Specifically designed for use in the high vibration and large diameter applications common in heavy truck, off-road equipment and industrial machinery, our T-Bolts feature a 3/4" wide stainless steel band and welded construction for reliability. They are available in part or all stainless steel construction and in Standard T-Bolt, Channel Bridge T-Bolt and Spring Loaded T-Bolt designs.

Standard T-Bolts – Ideal 30010 Series/Tridon 813 Series

The most widely used T-Bolt clamp design. Typical applications include truck air intake systems, cold side charge air systems, off-road equipment and industrial machinery.

Band/Liner: 3/4" width, 201/301 stainless steel.

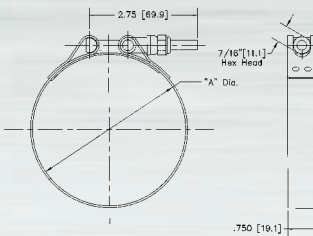
Bolt: 1/4"-28, plated steel.

Nut: 7/16" hex, nylon insert, plated steel locknut.

Trunnion: Plated steel.

Covers clamping ranges from 1 3/8" to 8 1/2".

Additional clamping ranges and designs are available on request – Contact Ideal for information.



Channel Bridge T-Bolts – Ideal 30020 Series/Tridon 814 Series

Channel bridge T-Bolts provide the added insurance of a rigid bridge liner to help prevent leak paths in more demanding applications. Typical applications include truck air intake systems, cold side charge air systems and industrial equipment and machinery.

Band/Bridge: 3/4" width, 201/301 stainless steel.

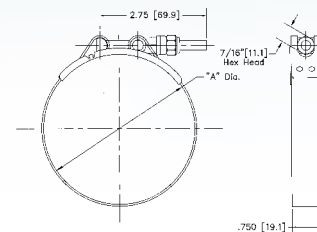
Bolt: 1/4"-28 plated steel.

Nut: 7/16" hex, nylon insert, plated steel locknut.

Trunnion: Plated steel.

Covers clamping ranges from 1 3/8" to 8 1/2".

Additional clamping ranges and designs are available on request – Contact Ideal for information.



Spring Loaded T-Bolts – Ideal 30030 Series/Tridon 819 Series

The helical spring design provides the self-compensating (constant tension) feature that prevents the development of leak paths due to temperature fluctuations. Typical applications include heavy truck charge air and cooling systems.

Band/Bridge: 3/4" width, 201/301 stainless steel.

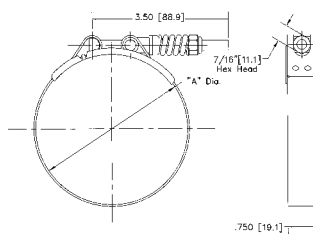
Bolt: 1/4"-28 plated steel. Spring: Plated steel.

Nut: 7/16" hex, nylon insert, plated steel locknut.

Trunnion: Plated steel.

Covers clamping ranges from 3 1/16" to 4 9/16".

Additional clamping ranges and designs are available on request – Contact Ideal for information.



STANDARD AND CHANNEL BRIDGE T-BOLTS

SAE Sizes	Standard T-Bolt		Channel Bridge T-Bolt		Min. Dia. (Inches)	Max. Dia. (Inches)	Min. Dia. (mm)	Max. Dia. (mm)	Installation Torque
	Ideal Part No.	Tridon Part No.	Ideal Part No.	Tridon Part No.					
–	30010 0138	813-138	30020 0138	814-138	1 3/8	1 9/16	35.1	38.6	75.0 in. lbs. (8.5 Nm)
–	30010 0150	813-150	30020 0150	814-150	1 1/2	1 5/8	38.1	41.7	75.0 in. lbs. (8.5 Nm)
–	30010 0163	813-163	30020 0163	814-163	1 5/8	1 7/8	41.4	46.0	75.0 in. lbs. (8.5 Nm)
28	30010 0175	813-175	30020 0175	814-175	1 3/4	2	44.5	50.8	75.0 in. lbs. (8.5 Nm)
32	30010 0188	813-188	30020 0188	814-188	1 7/8	2 3/16	47.8	55.6	75.0 in. lbs. (8.5 Nm)
36	30010 0200	813-200	30020 0200	814-200	2	2 5/16	50.8	58.7	75.0 in. lbs. (8.5 Nm)
40	30010 0213	813-213	30020 0213	814-213	2 1/8	2 7/16	54.1	62.0	75.0 in. lbs. (8.5 Nm)
44	30010 0225	813-225	30020 0225	814-225	2 1/4	2 9/16	57.2	65.0	75.0 in. lbs. (8.5 Nm)
48	30010 0238	813-238	30020 0238	814-238	2 3/8	2 11/16	60.5	68.3	75.0 in. lbs. (8.5 Nm)
52	30010 0250	813-250	30020 0250	814-250	2 1/2	2 13/16	63.5	71.4	75.0 in. lbs. (8.5 Nm)
56	30010 0263	813-263	30020 0263	814-263	2 5/8	2 15/16	66.8	74.7	75.0 in. lbs. (8.5 Nm)
60	30010 0275	813-275	30020 0275	814-275	2 3/4	3 1/16	69.9	77.7	75.0 in. lbs. (8.5 Nm)
64	30010 0288	813-288	30020 0288	814-288	2 7/8	3 3/16	73.2	81.0	75.0 in. lbs. (8.5 Nm)
68	30010 0300	813-300	30020 0300	814-300	3	3 5/16	76.2	84.1	75.0 in. lbs. (8.5 Nm)
72	30010 0313	813-313	30020 0313	814-313	3 1/8	3 7/16	79.5	87.4	75.0 in. lbs. (8.5 Nm)
76	30010 0325	813-325	30020 0325	814-325	3 1/4	3 9/16	82.6	90.4	75.0 in. lbs. (8.5 Nm)
80	30010 0338	813-338	30020 0338	814-338	3 3/8	3 11/16	85.9	93.7	75.0 in. lbs. (8.5 Nm)
84	30010 0350	813-350	30020 0350	814-350	3 1/2	3 13/16	88.9	96.8	75.0 in. lbs. (8.5 Nm)
88	30010 0363	813-363	30020 0363	814-363	3 5/8	3 15/16	92.2	100.1	75.0 in. lbs. (8.5 Nm)
92	30010 0375	813-375	30020 0375	814-375	3 3/4	4 1/16	95.3	103.1	75.0 in. lbs. (8.5 Nm)
100	30010 0400	813-400	30020 0400	814-400	4	4 5/16	101.6	109.5	75.0 in. lbs. (8.5 Nm)
108	30010 0425	813-425	30020 0425	814-425	4 1/4	4 9/16	108.0	115.8	75.0 in. lbs. (8.5 Nm)
116	30010 0450	813-450	30020 0450	814-450	4 1/2	4 13/16	114.3	122.2	75.0 in. lbs. (8.5 Nm)
124	30010 0475	813-475	30020 0475	814-475	4 3/4	5 1/16	120.7	128.5	75.0 in. lbs. (8.5 Nm)
132	30010 0500	813-500	30020 0500	814-500	5	5 5/16	127.0	134.9	75.0 in. lbs. (8.5 Nm)
140	30010 0525	813-525	30020 0525	814-525	5 1/4	5 9/16	133.4	141.2	75.0 in. lbs. (8.5 Nm)
148	30010 0550	813-550	30020 0550	814-550	5 1/2	5 13/16	139.7	147.6	75.0 in. lbs. (8.5 Nm)
156	30010 0575	813-575	30020 0575	814-575	5 3/4	6 1/16	146.1	153.9	75.0 in. lbs. (8.5 Nm)
164	30010 0600	813-600	30020 0600	814-600	6	6 5/16	152.4	160.3	75.0 in. lbs. (8.5 Nm)
172	30010 0625	813-625	30020 0625	814-625	6 1/4	6 9/16	158.8	166.6	75.0 in. lbs. (8.5 Nm)
180	30010 0650	813-650	30020 0650	814-650	6 1/2	6 13/16	165.1	173.0	75.0 in. lbs. (8.5 Nm)
188	30010 0675	813-675	30020 0675	814-675	6 3/4	7 1/16	171.5	179.3	75.0 in. lbs. (8.5 Nm)
196	30010 0700	813-700	30020 0700	814-700	7	7 5/16	177.8	185.7	75.0 in. lbs. (8.5 Nm)
204	30010 0725	813-725	30020 0725	814-725	7 1/4	7 9/16	184.2	192.0	75.0 in. lbs. (8.5 Nm)
212	30010 0750	813-750	30020 0750	814-750	7 1/2	7 13/16	190.5	198.4	75.0 in. lbs. (8.5 Nm)
220	30010 0775	813-775	30020 0775	814-775	7 3/4	8 1/16	196.9	204.7	75.0 in. lbs. (8.5 Nm)
228	30010 0800	813-800	30020 0800	814-800	8	8 5/16	203.2	211.1	75.0 in. lbs. (8.5 Nm)
236	30010 0825	813-825	30020 0825	814-825	8 1/4	8 9/16	209.6	217.4	75.0 in. lbs. (8.5 Nm)
244	30010 0850	813-850	30020 0850	814-850	8 1/2	8 13/16	215.9	223.8	75.0 in. lbs. (8.5 Nm)

Additional sizes and designs available – Contact Ideal for information.

SPRING LOADED T-BOLTS

SAE Sizes	Spring Loaded T-Bolt		Min. Dia. (Inches)	Max. Dia. (Inches)	Min. Dia. (mm)	Max. Dia. (mm)	Installation Torque
	Ideal Part No.	Tridon Part No.					
70	30030 0306	819-306	3 1/16	3 3/8	77.8	85.7	75.0 in. lbs. (8.5 Nm)
86	30030 0356	819-356	3 9/16	3 7/8	90.5	98.4	75.0 in. lbs. (8.5 Nm)
102	30030 0406	819-406	4 1/16	4 3/8	103.2	111.1	75.0 in. lbs. (8.5 Nm)
118	30030 0456	819-456	4 9/16	4 7/8	115.9	123.8	75.0 in. lbs. (8.5 Nm)

Additional sizes and designs available – Contact Ideal for information.



V-BANDS

V-Bands provide a secure, reliable connection for virtually any flanged joint. Typical applications include filter housings, turbocharger systems, exhaust systems and industrial applications where a flanged connection is required.

V-Bands are available in a wide range of band and v-insert configurations. Contact Ideal with your special requirements.