

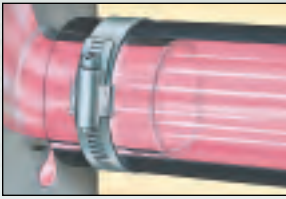
HEAVY-DUTY CONSTANT TENSION

FLEX-GEAR® CLAMPS

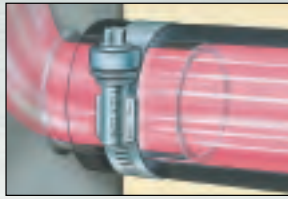
To eliminate “cold flow” leakage, you have to shut off the leak paths. Flex-Gear® heavy-duty constant tension clamps provide the self-adjusting band you need for a dependable seal, even in the coldest conditions.

Key features:

- Larger, heavier-gauge, precision-formed spring washers provide higher rates of band tension and adjustment for a more dependable seal
- Inner liner protects against shearing of hose surfaces
- Provides a uniform 360° seal
- Reusable



Non-compensating clamp cannot adjust during extreme temperature changes, allowing leaks to occur



Flex-Gear adjusts with the hose and fitting to maintain constant tension on the connection, eliminating leak paths

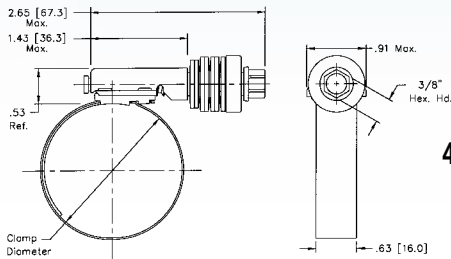


Ideal Flex-Gear HD® 41 Series (Tridon N/A)

Screw: 3/8" hex-head. Carbon plated steel.
Band, liner and housing: 5/8" design. 300 grade stainless steel.
Washers: 300 grade stainless steel.

Ideal Flex-Gear HD® 45 Series (Tridon N/A)

Screw: 3/8" hex-head. 410 stainless steel.
Band, liner and housing: 5/8" design. 300 grade stainless steel.
Washers: 300 grade stainless steel.



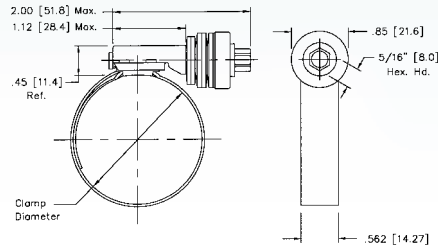
41 & 45 Series

Ideal Flex-Gear® 43 Series (Tridon N/A)

Screw: 5/16" hex-head. Carbon plated steel.
Band, liner and housing: 9/16" design. 300 grade stainless steel.
Washers: 300 grade stainless steel.

Ideal Flex-Gear® 47 Series (Tridon N/A)

Screw: 5/16" hex-head. 410 stainless steel.
Band, liner and housing: 9/16" design. 300 grade stainless steel.
Washers: 300 grade stainless steel.



43 & 47 Series

Measurements in illustrations are in inches [millimeters]

FLEX-GEAR HD		CLAMPING RANGE						
SAE Sizes	Ideal Part No.	Ideal Part No.	English (in.)		Metric (mm)		Fits Hose I.D.	
			Min. Dia.	Max. Dia.	Min. Dia.	Max. Dia.	Min. (in.)	Max. (in.)
	41	45						
175	41175	45175	1	1 3/4	25	45	7/8	1 1/8
212	41200	45200	1 1/4	2 1/8	32	54	1	1 1/2
262	41250	45250	1 3/4	2 5/8	45	67	1 1/2	2
312	41300	45300	2 1/4	3 1/8	57	79	2	2 1/2
362	41350	45350	2 3/4	3 5/8	70	92	2 1/2	3
412	41400	45400	3 1/4	4 1/8	83	105	3	3 1/2
462	41450	45450	3 3/4	4 5/8	95	117	3 1/2	4
512	41500	45500	4 1/4	5 1/8	108	130	4	4 1/2
562	41550	45550	4 3/4	5 5/8	121	143	4 1/2	5
612	41600	45600	5 1/4	6 1/8	133	155	5	5 1/2
662	41650	45650	5 3/4	6 5/8	146	168	5 1/2	6
712	41700	45700	6 1/4	7 1/8	159	181	6	6 1/2
762	41750	45750	6 3/4	7 5/8	172	193	6 1/2	7
812	41800	45800	7 1/4	8 1/8	184	206	7	7 1/2
862	41850	45850	7 3/4	8 5/8	197	219	7 1/2	8
912	41900	45900	8 1/4	9 1/8	210	232	8	8 1/2

FLEX-GEAR		CLAMPING RANGE						
SAE Sizes	Ideal Part No.	Ideal Part No.	English (in.)		Metric (mm)		Fits Hose I.D.	
			Min. Dia.	Max. Dia.	Min. Dia.	Max. Dia.	Min. (in.)	Max. (in.)
	43	47						
10	43010	47010	9/16	1 1/16	14	27	3/8	5/8
12	43012	47012	5/8	1 1/4	16	32	3/8	3/4
16	43016	47016	13/16	1 1/2	21	38	3/4	7/8
20	43020	47020	13/16	1 3/4	20	44	3/4	1 1/8
24	43024	47024	1 1/16	2	27	51	7/8	1 3/8
28	43028	47028	1 5/16	2 1/4	33	57	1 1/4	1 5/8
32	43032	47032	1 9/16	2 1/2	40	63	1 1/2	1 7/8
36	43036	47036	1 13/16	2 3/4	46	70	1 3/4	2
40	43040	47040	2 1/16	3	52	76	2	2 1/4
44	43044	47044	2 5/16	3 1/4	59	82	2 1/4	2 1/2
48	43048	47048	2 9/16	3 1/2	65	89	2 1/2	3

Additional sizes available upon request.