

CONSTANT TENSION

SPRING BAND CLAMPS

Engineered for automotive original equipment applications, the heat treated steel construction and spring design compensate for compression set or thermal cycling. Spring bands can be pre-installed on the hose as a sub-assembly.

Tridon Clipless Spring Band (Ideal N/A)

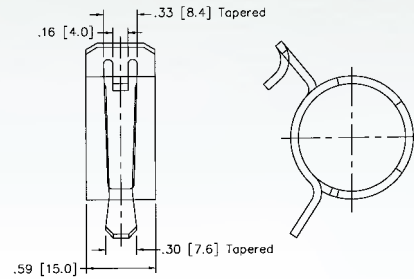
The clipless style is delivered in the full open position for release with a common screwdriver.

Tridon Stop Tab Spring Band (Ideal N/A)

The stop tab design is delivered in the closed position for installation with a spring band installation tool.

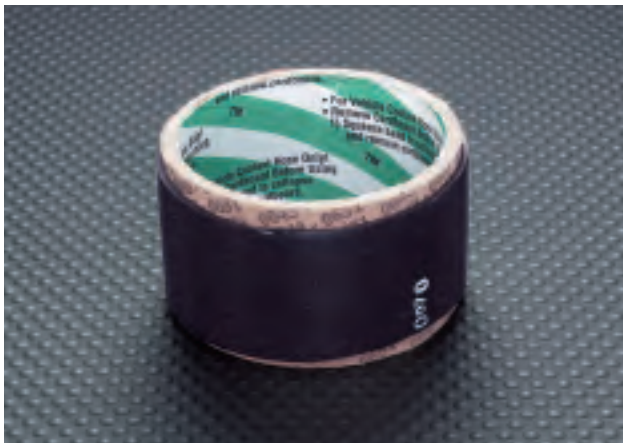


SPRING BAND CLAMPS					
Clipless Tridon Part No.			Stop Tab Tridon Part No.		
SAE Sizes	15mm width	20mm width	SAE Sizes	15mm width	12mm width
15	-	-	15	936150	-
17	958170	-	17	936170	926170
20	958200	-	20	933200	-
23	-	-	23	-	923230
24	958240	-	24	936240	926240
27	958270	-	27	936270	923270
34	958340	-	34	-	-
35	958350	-	35	933350	-
40	-	-	40	936400	926270
42	958420	988420	42	-	-
46	958460	-	46	-	-
47	-	-	47	933470	-
48	958480	-	48	933480	-
49	958540	988490	49	-	-
54	-	988540	54	-	-
55	-	988550	55	936550	-
56	-	988560	56	-	-
61	-	988610	61	-	-



POWERGRIP™ SB 46 SERIES

Ideal Shrink Band clamps are made of a heat-sensitive thermoplastic with a memory that prevents them from over-tightening or under-tightening. Shrinks on with a heat gun. They are environmentally friendly, virtually eliminating antifreeze leaks and groundwater contamination. (Tridon N/A).



Description	POWERGRIP CLAMPING RANGE			
	Ideal Part No.	Nominal Hose ID (in.)	English (in.)	
			Min. (in.)	Max. (in.)
SB15	46015	1/4	1/2	11/16
SB19	46019	3/8	11/16	13/16
SB22	46022	1/2	13/16	15/16
SB25	46025	5/8	15/16	1 1/16
SB29	46029	3/4	1 1/16	1 3/16
SB34	46034	1	1 3/16	1 1/2
SB41	46041	1 1/4	1 1/2	1 3/4
SB48	46048	1 1/2	1 3/4	2
SB54	46054	1 3/4	2	2 1/4
SB60	46060	2	2 1/4	2 1/2
SB67	46067	2 1/4	2 1/2	2 3/4
SB73	46073	2 1/2	2 3/4	3
SB79	46079	2 3/4	3	3 1/4
SB86	46086	3	3 1/4	3 1/2
SB90	46090	3 1/8	3 1/2	3 5/8