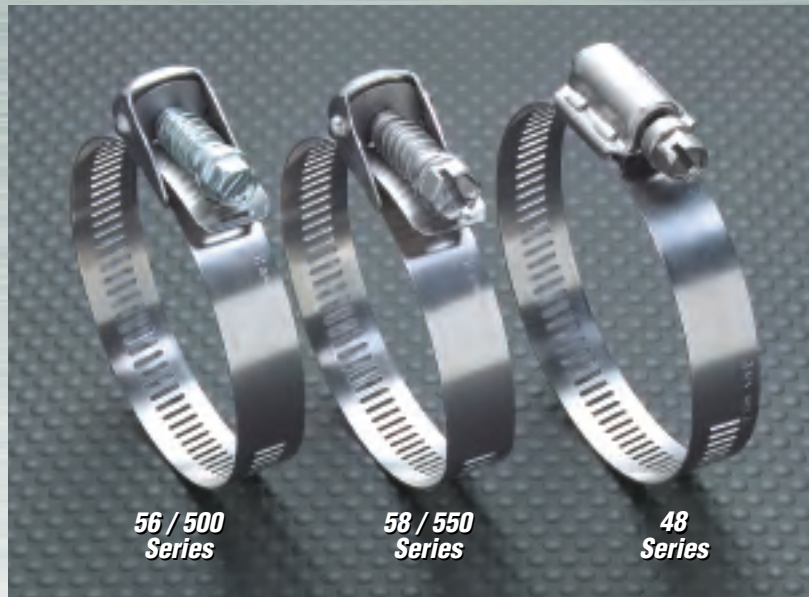
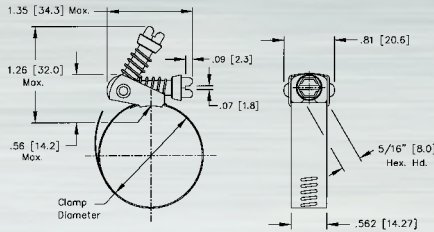


## QUICK RELEASE CLAMPS

Quick release style worm drive clamps are indispensable for installation in closed systems where the clamp must be disengaged to be applied. The swivel-action locking of screw to band makes both installation and removal fast and easy.

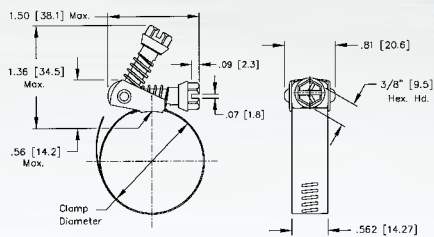
### Ideal Snaplock® 56 Series (Tridon N/A)

Screw: 5/16" hex-head. Plated carbon steel.  
Band and housing: 9/16" design.  
201/301 stainless steel.



### Ideal Snaplock® 58 Series (Tridon N/A)

Screw: 3/8" hex-head. 410 stainless steel.  
Band and housing: 9/16" design.  
201/301 stainless steel.



### Tridon 500 Series (Ideal N/A)

Screw: 5/16" hex-head. Plated carbon steel.  
Band and housing: 1/2" design.  
201/301 stainless steel.

### Tridon 550 Series (Ideal N/A)

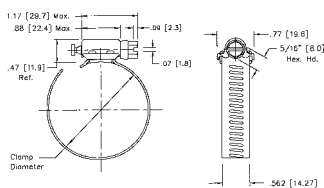
Screw: 5/16" hex-head. 410 stainless steel.  
Band and housing: 1/2" design.  
201/301 stainless steel.

## SURELOCK QUICK ENGAGEMENT CLAMPS

Surelock's bind-free pull-through design makes installation quick and easy. Captured screw design makes engagement and final tensioning trouble-free. Extended housing embraces 25% more screw threads than competitive designs.

### Ideal Surelock 48 Series (Tridon N/A)

Screw: 5/16" hex-head. 300 grade stainless steel.  
Band and housing: 9/16" design. 300 grade stainless steel.



Measurements in illustrations are in inches [millimeters]

Also Available In  
**316**  
STAINLESS STEEL

SNAPLOCK/QUICK RELEASE					CLAMPING RANGE					
SAE Sizes	Ideal Part No.	Tridon Part No.	Ideal Part No.	Tridon Part No.	English (in.)		Metric (mm)		Fits Hose I.D.	
					Min.Dia.	Max.Dia.	Min.Dia.	Max.Dia.	Min.(in.)	Max.(in.)
	<b>56</b>	<b>500</b>	<b>58</b>	<b>550</b>						
012	5612	500-012*	5812	550-012*	1/2	1 1/4	13	32	3/8	3/4
020	5620	500-020*	5820	550-020*	3/4	1 3/4	19	44	3/4	1 1/8
024	5624	500-024*	5824	550-024*	1	2	26	51	7/8	1 3/8
028	5628	500-028*	5828	550-028*	1	2 1/4	26	57	7/8	1 5/8
036	5636	500-036*	5836	550-036*	1	2 3/4	26	70	7/8	2
048	5648	500-048*	5848	550-048*	1 1/2	3 1/2	38	89	1 1/2	2 3/4
056	5656	500-056	5856	550-056	1	4	26	101	7/8	3 1/2
072	5672	500-072	5872	550-072	2	5	51	127	2	4 1/2
088	5688	500-088	5888	550-088	2	6	51	152	2	5 1/2
104	56104	500-104	58104	550-104	1 3/4	7	45	178	1 3/4	6 1/2
116	56116	500-116*	58116	550-116*	1 3/4	7 3/4	45	197	1 3/4	7
128	56128	500-128	58128	550-128	2 1/4	8 1/2	45	216	1 3/4	7 1/2
136	56136	500-136*	58136	550-136	1 3/4	9	45	228	1 3/4	8 1/2
152	56152	500-152	58152	550-152	2	10	51	254	2	9 1/2
188	56188	500-188	58188	550-188	2	12 1/4	51	311	2	11 1/2

\* Non-stocking item

Additional sizes available - Contact Ideal for information.

Clamps are shipped disengaged. Information on special sizes available on request.

SURELOCK		CLAMPING RANGE					
SAE Sizes	Ideal Part No.	English (in.)		Metric (mm)		Fits Hose I.D.	
		Min. Dia.	Max. Dia.	Min. Dia.	Max. Dia.	Min.(in.)	Max.(in.)
	<b>48</b>						
12	48012	1/2	1 1/4	13	32	3/8	3/4
20	48020	3/4	1 3/4	19	44	3/4	1 1/8
24	48024	3/4	2	19	51	3/4	1 3/8
28	48028	1	2 1/4	26	57	7/8	1 5/8
32	48032	1	2 1/2	26	63	7/8	1 7/8
36	48036	7/8	2 3/4	22	70	3/4	2
48	48048	1	3 1/2	26	89	1	2 3/4
56	48056	1	4	26	101	1	3 1/2
72	48072	2	5	51	127	2	4 1/2
80	48080	2 9/16	5 1/2	65	140	2 1/2	5
88	48088	2	6	51	152	2	5 1/2
104	48104	2	7	51	178	2	6 1/2
116	48116	1 3/4	7 3/4	44	197	1 3/4	7
128	48128	4 1/4	8 1/2	108	216	4 1/4	8
152	48152	4	10	102	254	4	9 1/2
180	48180	7 3/4	11 3/4	197	298	7 1/2	11
188	48188	6 1/4	12 1/4	159	311	6	11 1/2

Additional sizes available - Contact Ideal for information