

## SUPERIOR QUALITY AND CLAMPING EXPERTISE

Ideal is a leading manufacturer and supplier of clamping and joint sealing products worldwide. With over 90 years of experience in clamping technology, we've employed advanced materials and cutting-edge technology to construct innovative, superior quality clamping and sealing products for both simple and extraordinary uses.

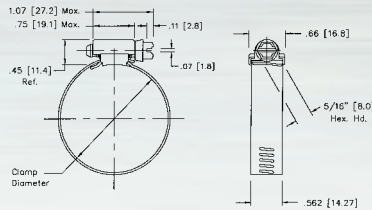
Setting the industry standard for fastener engineering expertise, we offer a broad range of Ideal and Tridon brand worm drive hose clamps, high-torque clamps, constant tension clamps and a host of specialty and custom clamping products, available in a variety of material types and configurations. Our one-piece mechanical design locks the housing directly to the band to provide maximum strength and anti-shear protection.

Let us help you find a clamp or design one that fits your specific requirements.



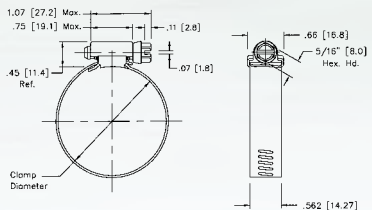
## FULL-SIZE 9/16" WORM DRIVE CLAMPS

The industry standard, these versatile clamps have a wide range of applications. From simple home and auto repair to heavy industrial uses, you can be sure there's a full-size clamp to handle the job.



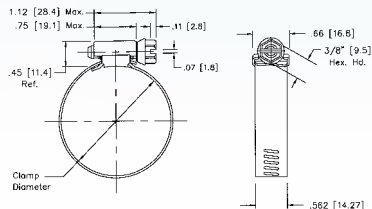
### Ideal 50 Series / Tridon 150 Series

Our most popular full-size clamp.  
Screw: 5/16" hex-head. Plated carbon steel.  
Band and housing: 9/16" design. 201/301 stainless steel.



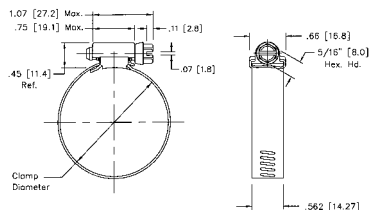
### Ideal 63 Series / Tridon 225 Series

High-nickel grade stainless steel clamp for boating applications and other corrosive environments.  
Screw: 5/16" hex-head. Corrosion-resistant high-nickel grade stainless steel.  
Band and housing: 9/16" design. High-nickel grade stainless steel.



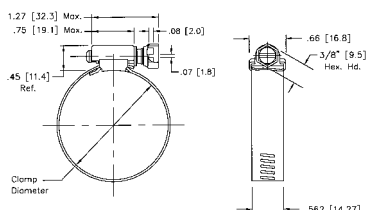
### Ideal 64 Series (Tridon N/A)

All stainless steel construction especially suited to industrial applications.  
Screw: 3/8" hex-head. 410 stainless steel.  
Band and housing: 9/16" design. 201/301 grade stainless steel.



### Ideal 68 Series (Tridon N/A)

All stainless steel construction especially suited to industrial applications.  
Screw: 5/16" hex-head. 410 stainless steel.  
Band and housing: 9/16" design. 201/301 grade stainless steel.



### Combo-Hex®

Combo-Hex clamps are the clamps professional mechanics choose most often. Particularly helpful in hard-to-reach areas, they feature an exclusive, safety-collared, deep-slotted screw design that prevents screwdrivers from slipping and puncturing the hose wall. Combo-Hex clamps can be installed with a screwdriver, nutdriver or socket wrench.

### Ideal 54 Series (Tridon N/A)

The professional mechanic's choice.  
Screw: 3/8" safety-collared hex-head. Plated carbon steel.  
Band and housing: 9/16" design. 201/301 stainless steel.

N/A - Not Available



FULL SIZE CLAMPS											CLAMPING RANGE					
SAE Sizes	Ideal Part No.	Tridon Part No.	Ideal Part No.	Tridon Part No.	Ideal Part No.	Tridon Part No.	Ideal Part No.	Tridon Part No.	Ideal Part No.	Tridon Part No.	English (in.)		Metric (mm)		Fits Hose I.D.	
	50	150	54	N/A	63	225	64	N/A	68	N/A	Min. Dia.	Max. Dia.	Min. Dia.	Max. Dia.	Min. (in.)	Max. (in.)
6	5006	-	5406	-	6306	-	6406	-	6806	-	3/8	7/8	10	22	5/16	3/8
8	5008	-	5408	-	6308	-	6408	-	6808	-	7/16	1	11	25	5/16	1/2
10	5010	150-010	5410	-	6310	225-010	6410	-	6810	-	1/2	1 1/16	13	27	3/8	5/8
12	5012	150-012	5412	-	6312	225-012	6412	-	6812	-	1/2	1 1/4	13	32	3/8	3/4
16	5016	150-016	5416	-	6316	225-016	6416	-	6816	-	11/16	1 1/2	18	38	3/4	7/8
20	5020	150-020	5420	-	6320	225-020	6420	-	6820	-	3/4	1 3/4	19	44	3/4	1 1/8
24	5024	150-024	5424	-	6324	225-024	6424	-	6824	-	1	2	25	51	7/8	1 3/8
28	5028	150-028	5428	-	6328	225-028	6428	-	6828	-	1 1/4	2 1/4	32	57	1 1/4	1 5/8
32	5032	150-032	5432	-	6332	225-032	6432	-	6832	-	1 1/2	2 1/2	38	63	1 1/2	1 7/8
36	5036	150-036	5436	-	6336	225-036	6436	-	6836	-	1 3/4	2 3/4	44	70	1 3/4	2
40	5040	150-040	5440	-	6340	225-040	6440	-	6840	-	2	3	51	76	2	2 1/4
44	5044	150-044	5444	-	6344	225-044	6444	-	6844	-	2 1/4	3 1/4	57	82	2 1/4	2 1/2
48	5048	150-048	5448	-	6348	225-048	6448	-	6848	-	2 1/2	3 1/2	64	89	2 1/4	2 3/4
52	5052	150-052	5452	-	6352	225-052	6452	-	6852	-	2 3/4	3 3/4	70	95	2 3/4	3
56	5056	150-056	5456	-	6356	225-056	6456	-	6856	-	3	4	76	101	3	3 1/2
60	5060	150-060	-	-	6360	225-060	6460	-	6860	-	3 1/4	4 1/4	83	108	3 1/4	3 3/4
64	5064	150-064	-	-	6364	225-064	6464	-	6864	-	2 1/2	4 1/2	64	114	2 1/2	4
72	5072	150-072	-	-	6372	225-072	6472	-	6872	-	3	5	76	127	3	4 1/2
80	5080	150-080	-	-	6380	225-080	6480	-	6880	-	3 1/2	5 1/2	89	140	3 1/2	5
88	5088	150-088	-	-	6388	225-088	6488	-	6888	-	4	6	102	152	4	5 1/2
96	5096	150-096	-	-	6396	225-096	6496	-	6896	-	4 1/2	6 1/2	114	165	4 1/2	6
104	50104	150-104	-	-	63104	225-104	64104	-	68104	-	5	7	127	178	5	6 1/2
116	-	-	-	-	63116	225-116	-	-	68116	-	5 3/4	7 3/4	146	197	5 1/2	7
128	-	-	-	-	63128	225-128	-	-	-	-	2 1/2	8 1/2	64	216	3	7 1/2
140	-	-	-	-	63140	225-140*	-	-	-	-	7 1/4	9 1/4	184	235	7 1/2	8 1/2
152	-	-	-	-	63152	225-152	-	-	-	-	2	10	51	254	2 1/2	9 1/2
164	-	-	-	-	63164	225-164*	-	-	-	-	2	10 3/4	51	273	2 1/2	10
176	-	-	-	-	63176	225-176*	-	-	-	-	9 1/2	11 1/2	241	292	10	11
188	-	-	-	-	63188	225-188*	-	-	-	-	2	12 1/4	51	311	2 1/2	11 1/2
208	-	-	-	-	63208	225-208*	-	-	-	-	11 1/2	13 1/2	292	343	12	13
224	-	-	-	-	63224	225-224*	-	-	-	-	12 1/2	14 1/2	318	368	13	14
236	-	-	-	-	63236	225-236*	-	-	-	-	13 1/4	15 1/4	337	387	13 1/2	14 1/2
248	-	-	-	-	63248	225-248*	-	-	-	-	2	16	51	406	2 1/2	15 1/2

Additional sizes available - Contact Ideal for information

\* Non-stocking item

N/A - Not Available