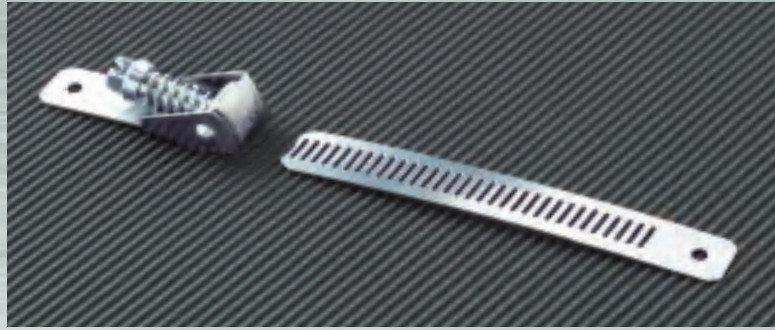
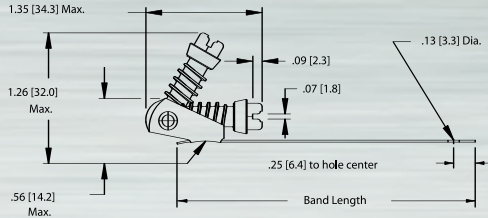


## TWO PART CLAMPS

This unique two part clamp is adaptable to a variety of latching or locking applications where repeated opening and closing is necessary. Holes in the end of each part allow for permanent installation of clamp with rivets or screws.

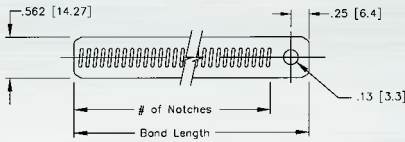


### Ideal 58 Series / Tridon 502 Series



HOUSING					
Ideal Part No.	Tridon Part No.	Band Length		Hole Diameter	
		Inches	mm	Inches	mm
<b>58 (2-pc) Series</b>	<b>502 Series</b>				
5823	502-002	1.86	47.2	0.13	3.3
5825	502-003	1.50	38.1	0.13	3.3
5829	502-004	3.72	94.5	0.13	3.3
5830	502-005	3.63	92.1	0.25	6.4

### Ideal 62 Series / Tridon 503 Series



Measurements in illustrations are in inches (millimeters)

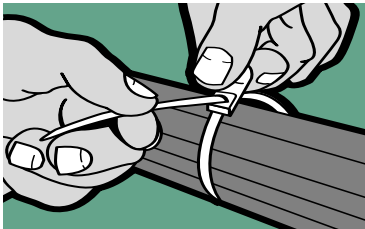
BAND					
Ideal Part No.	Tridon Part No.	Band Length		Hole Diameter	
		Inches	mm	Inches	mm
<b>62 (2-pc) Series</b>	<b>503 Series</b>				
62647	503-002	4.81	122.2	0.13	3.3
62648	503-003	3.88	98.4	0.13	3.3
62649	503-004	6.50	165.1	0.13	3.3
62650	503-005	4.75	120.7	0.13	6.4
62654	503-006	10.06	255.6	0.13	3.3
62655	503-007	2.00	50.8	0.13	3.3
62656	503-008	6.00	152.4	0.25	6.4

Screw: 5/16" hex-head. Plated carbon steel.  
Band and housing: 1/2" wide stainless steel.

Also available in all zinc-plated, carbon steel. Contact Ideal for details.

## NYLON CABLE TIES

One piece 6/6 nylon for tying, bundling and positioning in industrial, PHAC, automotive and marine applications. Corrosion and fungus-resistant. Available in diameters from 1/16" to 13".

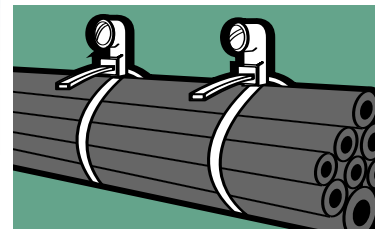


### Ideal 665 Series (Tridon N/A)

Self-locking.

- Install easily with or without tools
- Corrosion and fungus resistant
- Tapered tips slip easily under and around cables
- Flexible nylon conforms readily to most shapes
- Uniform serrations along the tie permit easy "pull-through" right down to the bundle – ready for final tensioning and cut off for a neat, tight harness

NYLON CABLE TIES - 665 SERIES				
Ideal Part No.	CLAMPING RANGE		Min. Tensile Strength	Applicable Mil. Spec.
	Min. Dia.	Max. Dia.		
<b>665</b>				
66501	1/16	1	18 lbs.	MS3367-4
66502	1/16	1 1/4	30 lbs.	MS3367-5
66505	1/16	1 3/4	50 lbs.	MS3367-1
66506	1/16	3	50 lbs.	MS3367-7
66507	1/16	4	50 lbs.	MS3367-2
66509	3/16	4	120 lbs.	MS3367-3
66510	3/16	6	175 lbs.	MS3367-3
66511	3/16	9	175 lbs.	MS3367-6
66512	3/16	13	175 lbs.	None



### Ideal 666 Series (Tridon N/A)

Self-locking with mounting heads for quick, simple cable mounting.

- Once ties are installed, simply pass a screw, bolt or rivet through mounting hole to secure harness in place
- Bundling and mounting is done with one unit

NYLON CABLE TIES - 666 SERIES				
Ideal Part No.	CLAMPING RANGE		Min. Tensile Strength	Hole Size
	Min. Dia.	Max. Dia.		
<b>666</b>				
66604	1/16	1 3/4	50 lbs.	0.208
66605	1/16	4	50 lbs.	0.208
66606	3/16	4	120 lbs.	0.250