

1/2" BAND CLAMPS



1/2" band clamps are suitable for most common home and automotive applications.

Ideal 57 Series / Tridon 611 Series

Screw: 5/16" hex-head.
Plated carbon steel.

Band and housing: 1/2" design.
201/301 stainless steel.

Ideal 67-1 Series / Tridon 625 Series Tridon Automotive Series "HSS"

Screw: 5/16" hex-head.
410 stainless steel (Ideal).
305 stainless steel (Tridon).

Band and housing: 1/2" design.
201/301 stainless steel.

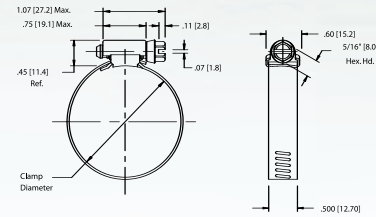
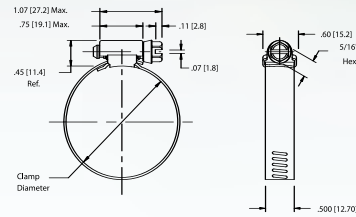
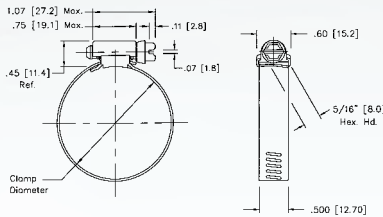
Ideal 67-5 Series / Tridon 620 Series

Screw: 5/16" hex-head.
High-nickel grade stainless steel.

Band and housing: 1/2" design.
High-nickel grade stainless steel.



Measurements in illustrations are in inches [millimeters]



1/2" BAND CLAMPS							CLAMPING RANGE					
SAE Sizes	Ideal Part No.	Tridon Part No.	Ideal Part No.	Tridon Part No.	Ideal Part No.	Tridon Part No.	English (in.)		Metric (mm)		Fits Hose I.D.	
							Min.	Dia.	Max.	Dia.	Min.	Dia.
	57	611	67-1	625 ⁽¹⁾	67-5	620						
6	5706	611-006	6706-1	625-006	6706-5	620-006	3/8	7/8	10	22	5/16	3/8
8	5708	611-008	6708-1	625-008	6708-5	620-008	7/16	1	11	25	5/16	1/2
10	5710	611-010	6710-1	625-010	6710-5	620-010	1/2	1 1/16	13	27	3/8	5/8
12	5712	611-012	6712-1	625-012	6712-5	620-012	1/2	1 1/4	13	32	3/8	3/4
16	5716	611-016	6716-1	625-016	6716-5	620-016	11/16	1 1/2	18	38	3/4	7/8
20	5720	611-020	6720-1	625-020	6720-5	620-020	3/4	1 3/4	19	44	3/4	1 1/8
24	5724	611-024	6724-1	625-024	6724-5	620-024	1	2	25	51	7/8	1 3/8
28	5728	611-028	6728-1	625-028	6728-5	620-028	1 1/4	2 1/4	32	57	1 1/4	1 5/8
32	5732	611-032	6732-1	625-032	6732-5	620-032	1 1/2	2 1/2	38	63	1 1/2	1 7/8
36	5736	611-036	6736-1	625-036	6736-5	620-036	1 3/4	2 3/4	44	70	1 3/4	2
40	5740	611-040	6740-1	625-040	6740-5	620-040	2	3	51	76	2	2 1/4
44	5744	611-044	6744-1	625-044	6744-5	620-044	2 1/4	3 1/4	57	82	2 1/4	2 1/2
48	5748	611-048	6748-1	625-048	6748-5	620-048	2 1/2	3 1/2	64	89	2 1/2	2 3/4
52	5752	611-052	6752-1	625-052	6752-5	620-052	2 3/4	3 3/4	70	95	2 3/4	3
56	5756	611-056	6756-1	625-056	6756-5	620-056	3	4	76	101	3	3 1/2
60	5760	611-060	6760-1	625-060	6760-5	620-060	3 1/4	4 1/4	83	108	3 1/4	3 1/2
64	5764	611-064	6764-1	625-064	6764-5	620-064	2 1/2	4 1/2	64	114	2 1/2	4
72	5772	611-072	6772-1	625-072	6772-5	620-072	3	5	76	127	3	4 1/2
80	5780	611-080	6780-1	625-080	6780-5	620-080	3 1/2	5 1/2	89	140	3 1/2	5
88	5788	611-088	6788-1	625-088	6788-5	620-088	4	6	102	152	4	5 1/2
96	5796	611-096	6796-1	625-096	6796-5	620-096	4 1/2	6 1/2	114	165	4 1/2	6
104	57104	611-104	67104-1	625-104	67104-5	620-104	5	7	127	178	5	6 1/2

⁽¹⁾ Automotive Series "HSS"

Additional sizes available - Contact Ideal for information