

SMALL DIAMETER CLAMPS

Micro-Gear® Clamps

Micro-Gear clamps are tiny, tough and precision engineered for use in such small hose applications as emission control, fuel lines and vacuum hoses. Their slim, 5/16" band and low profile housing make them easy to install in confined areas.

Ideal 62P Series Tridon 325 Series

Screw: 1/4" hex-head.
Plated carbon steel.

Band and housing: 5/16" design.
201/301 stainless steel.

Tridon 350 Series (Ideal N/A) Tridon Automotive Series "MAH"

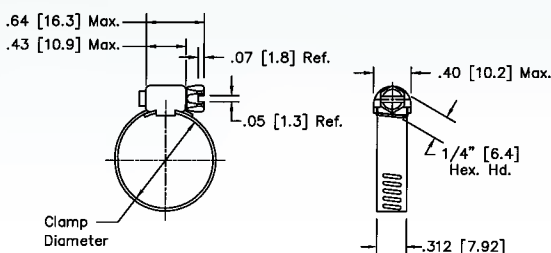
Screw: 1/4" hex-head.
410 stainless steel.

Band and housing: 5/16" design.
201/301 grade stainless steel.

Ideal 62M Series Tridon 345 Series

Screw: 1/4", high-nickel grade stainless steel.

Band and housing: 5/16" design.
High-nickel grade stainless steel.



MICRO GEAR CLAMPS								CLAMPING RANGE					
SAE Sizes	Ideal Part No.	Tridon Part No.	Ideal Part No.	Tridon Part No.	Ideal Part No.	Tridon Part No.	English (in.)		Metric (mm)		Fits Hose I.D.		
							Min.Dia.	Max.Dia.	Min.Dia.	Max.Dia.	Min.(in.)	Max.(in.)	
	62P	325	62M	345	N/A	350 ⁽¹⁾							
4	6204 ⁽²⁾	325-004	62604 ⁽⁴⁾	345-004	-	350-004	1/4	5/8	6	16	1/8	5/16	
5	62P05	325-005	62M05	345-005	-	350-005	1/4	11/16	7	17	1/8	3/8	
6	6206 ⁽³⁾	325-006	62606	345-006	-	350-006	5/16	7/8	8	22	1/4	7/16	
8	62P08	325-008	62M08	345-008	-	350-008	3/8	1	10	25	5/16	1/2	
10	62P10	325-010	62M10	345-010	-	350-010	3/8	1 1/16	10	27	5/16	5/8	
12	62P12	325-012	62M12	345-012	-	350-012	1/2	1 1/4	13	32	5/8	3/4	
16	62P16	325-016	62M16	345-016	-	350-016	1/2	1 1/2	13	38	5/8	1	
20	62P20	325-020	62M20	345-020*	-	350-020	3/4	1 3/4	19	44	1	1 1/4	
24	62P24	325-024	62M24	345-024*	-	350-024	1	2	26	51	1 1/4	1 1/2	
28	62P28	325-028	62M28	345-028*	-	350-028	1 1/4	2 1/4	32	57	1 1/2	1 3/4	
30	62P30	325-030*	62M30	345-030*	-	350-030	1 3/8	2 3/8	35	60	1 5/8	1 7/8	
32	62P32	325-032	62M32	345-032*	-	350-032	1 1/2	2 1/2	38	63	1 3/4	2	
36	62P36	325-036	62M36	345-036*	-	350-036	1 3/4	2 3/4	45	70	2	2 1/4	
44	62P44	325-044*	62M44	345-044*	-	350-044	2 1/4	3 1/4	57	82	2 1/4	2 3/4	
48	62P48	325-048*	62M48	345-048*	-	350-048	2 1/2	3 1/2	64	89	2 1/2	3	

⁽¹⁾ Automotive Series "MAH" ⁽³⁾ Old #6203 ⁽⁴⁾ Old #62602
⁽²⁾ Old #6202 Additional sizes available - Contact Ideal for information
 * Non-stocking item

Fuel Injection Clamps

Fuel injection system clamps are designed to provide the uniform sealing pressure required on fuel injection hose.

They feature non-perforated rolled-edge bands with a special nut and bolt-tightening design.

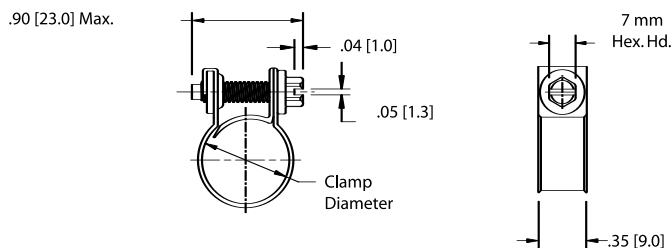
Ideal 52F Series / Tridon 905 Series Tridon Automotive Series "F.I."

Screw: 7mm hex-head.
Zinc-plated, clear chromate, carbon steel.

Band: 9mm wide.
Zinc-plated, clear chromate, carbon steel.

FUEL INJECTION CLAMPS				CLAMPING RANGE				Fits Hose I.D.
SAE Sizes	Ideal Part No.	Tridon Part No.	English (in.)		Metric (mm)			
	52F	905 ⁽¹⁾	Min.Dia.	Max.Dia.	Min.Dia.	Max.Dia.		
4	52F13	905-004	7/16	1/2	11	13	1/4"	
6	52F15	905-006	1/2	9/16	13	15	5/16"	
8	52F16	905-008	9/16	5/8	14	16	3/8"	

⁽¹⁾ Automotive Series "F.I."



N/A - Not Available