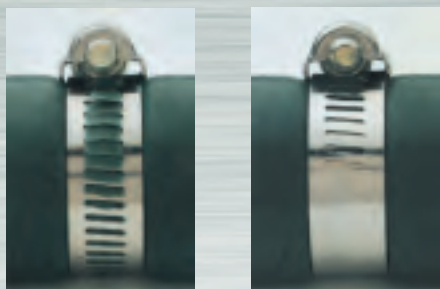


## LINED CLAMPS

Lined clamps are specially designed for use with silicone rubber and other soft hose applications. The liner protects the hose surface and prevents it from extruding or shearing through the band notches as the clamp is tightened.



Hose installed with unlined clamp

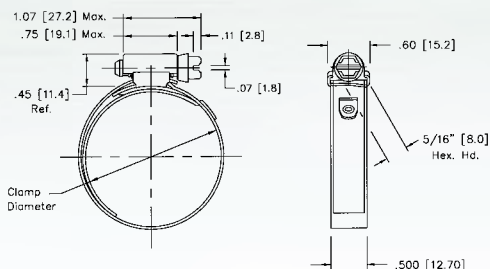
Hose installed with lined clamp



### Ideal 53 Series / Tridon 613 Series Tridon Automotive Series "ET"

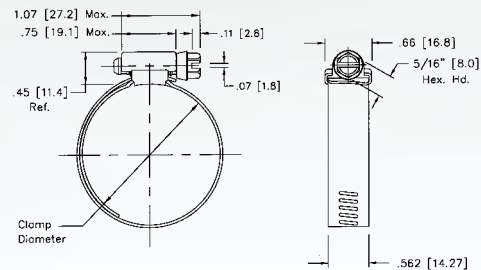
Screw: 5/16" hex-head.  
Plated carbon steel.

Band, liner and housing: 1/2" design.  
201/301 stainless steel.



### Ideal 65E Series / Tridon 615 Series

Screw: 5/16" hex-head. High-nickel grade stainless steel.  
Band, liner and housing: 9/16" (Ideal); 1/2" (Tridon).  
High-nickel grade stainless steel.



Measurements in illustrations are in inches [millimeters]

LINED CLAMPS					CLAMPING RANGE					
SAE Sizes	Ideal Part No.	Tridon Part No.	Ideal Part No.	Tridon Part No.	English (in.)		Metric (mm)		Fits Hose I.D.	
					Min. Dia.	Max. Dia.	Min. Dia.	Max. Dia.	Min. (in.)	Max. (in.)
	<b>53</b>	<b>613</b> <sup>(1)</sup>	<b>65-E</b> <sup>(2)</sup>	<b>615</b>						
6	5306	613-006	6506E	615-006*	5/8	7/8	16	22	-	3/8
8	5308	613-008	6508E	615-008*	5/8	1	16	25	-	1/2
10	5310	613-010	6510E	615-010*	3/4	1 1/16	19	27	-	5/8
12	5312	613-012	6512E	615-012*	7/8	1 1/4	22	32	-	3/4
16	5316	613-016	6516E	615-016*	1	1 1/2	26	38	3/4	1
20	5320	613-020	6520E	615-020*	1 1/8	1 3/4	29	44	7/8	1 1/4
24	5324	613-024	6524E	615-024*	1 1/4	2	32	51	1	1 1/2
28	5328	613-028	6528E	615-028*	1 5/16	2 1/4	33	57	1 1/8	1 3/4
32	5332	613-032	6532E	615-032*	1 9/16	2 1/2	40	63	1 1/4	2
36	5336	613-036	6536E	615-036*	1 13/16	2 3/4	46	70	1 1/2	2 1/4
40	5340	613-040	6540E	615-040*	2 1/16	3	52	76	1 3/4	2 1/2
44	5344	613-044	6544E	615-044*	2 5/16	3 1/4	59	82	2 1/8	2 3/4
48	5348	613-048	6548E	615-048*	2 9/16	3 1/2	65	89	2 1/4	3
52	5352	613-052*	6552E	615-052*	2 13/16	3 3/4	72	95	2 1/2	3 1/4
56	5356	613-056*	6556E	615-056*	3 1/16	4	78	101	2 3/4	3 1/2
60	5360	613-060*	6560E	615-060*	3 5/16	4 1/4	84	108	3 1/8	3 3/4
64	5364	613-064*	6564E	615-064*	3 9/16	4 1/2	91	114	3 1/4	4
72	5372	613-072*	6572E	615-072*	4 1/16	5	103	127	3 3/4	4 1/2

<sup>(1)</sup> Tridon Automotive Series "ET"      <sup>(2)</sup> 65-E clamps have a 9/16" band      Additional sizes available - Contact Ideal for information  
\* Non-stocking item